

FLOW CONTROL VALVE

SKB00.F.

DIMENSIONS

DESCRIPTION

The MIX Flow control valve, placed allows the regulation of the air flow.

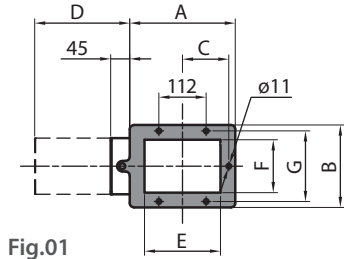


Fig.01

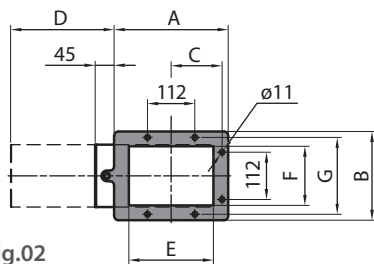


Fig.02

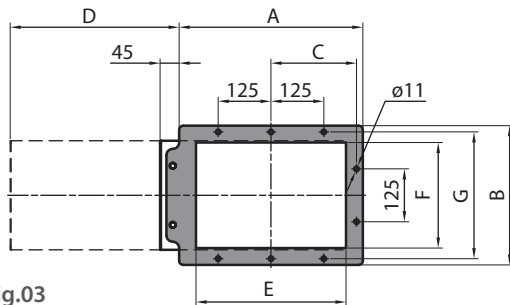


Fig.03

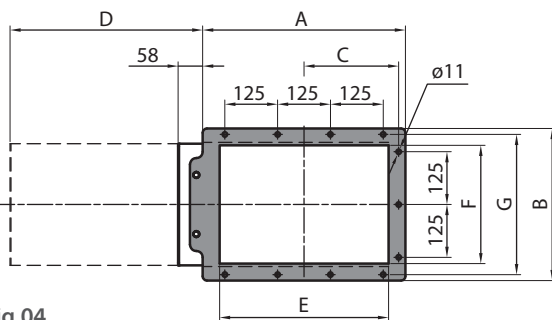
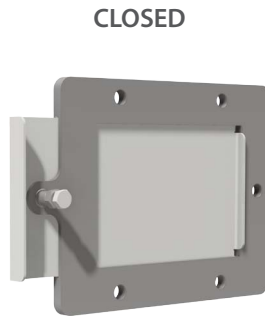
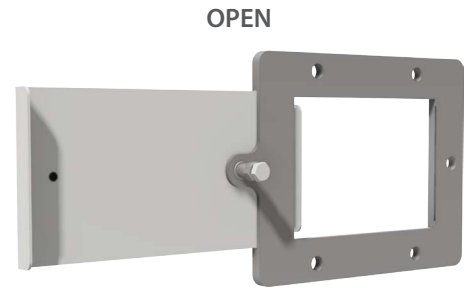


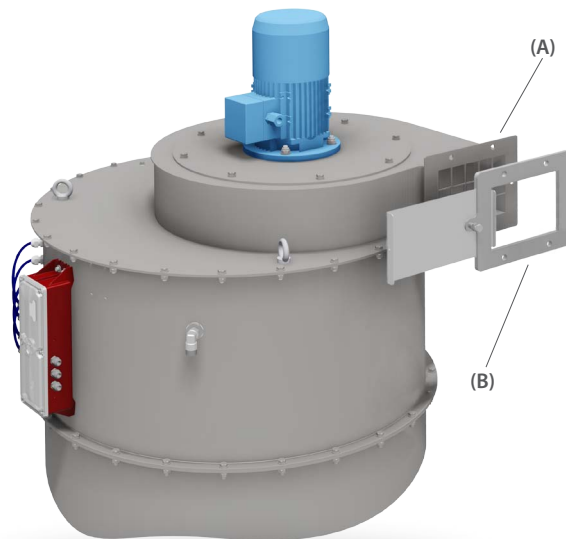
Fig.04



CLOSED



OPEN



The fixing drilling (B) match the outlet fan flange (A).

CODE	kW	Fig.	A (mm)	B (mm)	C (mm)	D (mm)	E (mm)	F (mm)	G (mm)	kg
SKB001F.	0,75 - 1,1	1	230	182	100	205	160	112	153	2
SKB002F.	1,5 - 2,2	1	250	195	109,5	225	180	125	167	2
SKB003F.	3 - 4	2	270	210	120,5	245	200	140	182	3
SKB004F.	5,5 - 7,5	3	435	330	202,5	400	355	250	300	6
SKB005F.	11	4	480	360	224	456	400	280	332	7

NOTE: All dimensions in mm, unless stated otherwise. The Company MIX reserves the right to alter product specifications without prior notice. All the quoted sizes are approximate. The given figures are mean values with tolerances entailed by the customary production-related variations. In any particular case, and to have the correct values, our written confirmation is necessary.

